

**XII INTERNATIONAL SYMPOSIUM ON AGRICULTURAL SCIENCES**



**AGRORES**  
**2023**

**BOOK OF PROCEEDINGS**

**24-26, May, 2023**

**Trebinje**

**Bosnia and Herzegovina**

*ISSN 2831-1248*

**XII International Symposium on Agricultural Sciences AgroReS 2023**  
**BOOK OF PROCEEDINGS**



XII International Symposium on Agricultural Sciences "AgroReS 2023"  
24-26, May, 2023; Trebinje, Bosnia and Herzegovina

**Book of proceedings**

*Publisher* University of Banja Luka  
Faculty of Agriculture  
University City  
Bulevar vojvode Petra Bojovića 1A  
78000 Banja Luka, Republic of Srpska, B&H

*Editor in Chief*  
Borut Bosančić

*Technical Editors*

Biljana Kelečević  
Danijela Kuruzović

*Edition*

Electronic edition  
Available on [www.agrores.org](http://www.agrores.org)  
<https://agrores.net/en/proceedings/>

CIP - Каталогизacija у публикацији  
Народна и универзитетска библиотека  
Републике Српске, Бања Лука

631(082)(0.034.2)

INTERNATIONAL Symposium on Agricultural Sciences "AgroReS  
2023" (12 ; Trebinje ; 2023)

Proceedings [Електронски извор] / XII International  
Symposium on Agricultural Sciences "AgroReS 2023", 24-26, May,  
2023 Trebinje, Bosnia and Herzegovina ; [editor in chief Borut  
Bosančić]. - Onlajn izd. - Ел. зборник. - Вања Лука : University of  
Banja Luka, Faculty of Agriculture, 2023. - Илустр. - (Proceedings,  
ISSN 2831-1248)

Системски захтеви: Нису наведени. - Наћин pristupa (URL):  
<https://agrores.net/en/proceedings/>. - Ел. публикација у ПДФ  
формату опсега 318 стр. - Насл. са насловног екрана. - Опис  
извора дана 22.05.2023. - Библиографија уз радове. - Abstracts.

ISBN 978-99938-93-89-9

COBISS.RS-ID 138383361

*SUPPORTED BY*

---

Ministry for Scientific and Technological Development, Higher Education and Information  
Society of the Republic of Srpska

Ministry of Agriculture, Forestry and Water Management of the Republic of Srpska

*ORGANIZING COMMITTEE*

---

*President*

Branimir Nježić, PhD

*Secretary*

Biljana Kelečević, PhD

*Members:*

Siniša Mitrić, PhD; Novo Pržulj, PhD; Željko Vaško, PhD; Danijela Kondić, PhD; Ilija Komljenović, PhD; Borut Bosančić, PhD; Svetlana Zeljković, PhD; Đorđe Savić, PhD; Petar Nikolić MA; and Danijela Kuruzović.

*SCIENTIFIC COMMITTEE*

---

Novo Pržulj, president - *B&H*, Adrian Asanica – *Romania*, Marina Antić – *B&H*, Hrabrin Bašev - *Bulgaria*, Klime Beleski – *North Macedonia*, Muhamed Brka - *B&H*, Zoran Bročić – *Srbija*, Claudiu Bunea – *Romania*, Geza Bujdosó - *Hungary*, Maria João Carvalho – *Portugal*, Miljan Cvetković – *B&H*, Jelena Čukanović – *Serbia*, Duška Delić - *B&H*, Arkadiusz Dyjakon – *Poland*, Diana Dumitras – *Romania*, Ivica Đalović - *Serbia*, Ivan Djuric – *Germany*, Zorica Đurić - *Australia*, Hamid El Bilali - *Italy*, Sezai Ercisli – *Turkey*, Buta Erzsebet – *Romania*, Daniel Falta – *Czech Republic*, Vesna Gantner - *Croatia*, Nikola Grujić – *Serbia*, Lari Hadelan – *Croatia*, Snježana Hrnčić – *Montenegro*, Attila Jambor - *Hungary*, Ivana Janeska Stamenkovska – *North Macedonia*, Andrei Jean-Vasile – *Romania*, Mugurel Jitea – *Romania*, Stoja Jotanović – *B&H*, Tatjana Jovanović-Cvetković – *B&H*, Romina Kabranova – *North Macedonia*, Radovan Kasarda - *Slovakia*, Desimir Knežević – *Srbija*, Ilija Komljenović – *B&H*, Danijela Kondić – *B&H*, Pavel Kotyza – *Czech Republic*, Zlatan Kovačević - *B&H*, Željko Lakić – *B&H*, Ivana Majić - *Croatia*, Ana Marjanović-Jeromela - *Serbia*, Mile Markoski – *North Macedonia*, Dimitrije Marković – *B&H*, Mihajlo Marković – *B&H*, Milan Marković - *Montenegro*, Zoran Marković - *Serbia*, Aleksandra Martinovska-Stojčeska – *North Macedonia*, Jegor Miladinović – *Serbia*, Stanislav Minta – *Poland*, Siniša Mitrić – *B&H*, Đorđe Moravčević – *Serbia*, Vesna Mrdalj – *B&H*, Iulia Muresan – *Romania*, Nebojša Novković - *Serbia*, Aleksandar Ostojić – *B&H*, Boris Pašalić - *B&H*, Vojo Radić – *B&H*, Ljiljana Radivojević – *Serbia*, Biljana Rogić – *B&H*, Gordana Rokvić-Knežić – *B&H*, Črtomir Rozman – *Slovenia*, Đorđe Savić – *B&H*, Nebojša Savić – *B&H*, Francesco Tiezzi - *Italy*, Mladen Todorović - *Italy*, Vida Todorović – *B&H*, Vojislav Trkulja – *B&H*, Jan Turan - *Serbia*, Željko Vaško – *B&H*, Božo Važić – *B&H*, Dragana Šunjka – *Serbia*, Nery Zapata – *Spain*, Vlade Zarić – *Serbia*, Ervin Zečević – *B&H*, Svjetlana Zeljković – *B&H*, Edvih Zhllima – *Albania*, Mirjana Žabić - *B&H*.

*HONORARY COMMITTEE*

---

- Željko Budimir, PhD - Minister for Scientific And Technological Development, Higher Education and Information Society, Government of the Republic of Srpska
  - Savo Minić, PhD - Minister of Agriculture, Forestry and Water Management, Government of the Republic of Srpska
  - Mirko Ćurić, MSc - Mayor of City of Trebinje
  - Prof. dr Radoslav Gajanin – Rector of the University of Banja Luka
  - Prof. dr Zlatan Kovačević – Dean of the Faculty of Agriculture, University of Banja Luka
  - Prof. dr Marina Pintar – Dean of the Biotechnical Faculty, University of Ljubljana, Slovenia
  - Prof. dr Nedeljko Tica – Dean of the Faculty of Agriculture, University of Novi Sad, Serbia
  - Prof. dr Božidarka Marković – Dean of the Biotechnical Faculty, University of Montenegro, Montenegro
  - Prof. dr Pavel Ryant – Dean of the Faculty of AgriScience, Mendel University of Brno, Czech Republic
  - Prof. dr Maurizio Raeli – Director of the Mediterranean Agronomic Institute of Bari, CIHEAM –IAMB, Italy
  - Prof. dr Dragana Latković - President of Bord of Directors in Institute of Field and Vegetable Crops Novi Sad, Serbia
  - Doc. dr Marina Antić – Director of the Institute of Genetic Resurces, University of Banja Luka
  - Prof. dr Vojisalav Trkulja – Director of the Agricultural Institute of the Republic of Srpska
  - Prof. dr Felix Arion – Dean of Faculty of Horticulture and Business in Rural Development USAMV Cluj-Napoca
  - Prof. dr Krunoslav Zrnajić – Dean of the Faculty of Agrobiotechnical Sciences, University of Osijek, Croatia
  - Prof. dr Andrei Jean-Vasile – Director of RebResNet scientific network
  - Prof. dr Vjekoslav Tanaskovik – Dean of the Faculty of Agricultural Sciences and Food of Ss. Cyril and Methodius, University in Skopje, North Macedonia
-

## TABLE OF CONTENTS

	Pages
TABLE OF CONTENTS	5-7
PREFACE	8
Zoran Bročić, Jasmina Oljača, Danijel Pantelić, Jelena Rudić, Dobrivoj Poštić, Ivana Momčilović	
EFFECTS OF CULTIVAR AND PLANT ORIGIN ON THE AEROPONIC PRODUCTION OF POTATO MINITUBERS	9-18
Helena Majstorović, Bogdan Garalejić, Maja Sudimac, Babka Jan, Miloš Pavlović	
PHOSPHORUS CONTENT AND STRATIFICATION IN THE SOIL LAYER 0-30 CM IN CONVENTIONAL (CT) AND NO-TILL (NT) TILLAGE SYSTEMS LONG TERM EXPERIMENT	19-26
Ranko Gantner, Zvonimir Steiner, Vesna Gantner	
LOW-INPUT FARMING FOR AGRICULTURAL SUSTAINABILITY	27-36
Marija Gavrilović, Ranko Koprivica, Miloš Zelić, Biljana Veljković, Zoran Mileusnić, Branislav Dudić, Aleksandra Dimitrijević Petrović	
ENERGY EQUIPMENT WITH TRACTORS IN THE COOPERATIVE "AGROPROM"	37-45
Slavica Vuković, Dragana Šunjka, Sanja Lazić, Antonije Žunić, Dragana Bošković, Aleksandra Šušnjar	
APPLICATION OF THE INSECTICIDE TEFLUTHRIN FOR THE CONTROL OF ELATERIDAE AND SCARABAEIDAE IN MAIZE CROPS	46-53
Ranko Gantner, Paul Schmit, Zvonimir Steiner, Domagoj Zimmer, Anamarija Banaj, Igor DelVechio, Vesna Gantner	
FIRST TESTING OF HORSE-DRAWN ROLLER-CUTTER FOR GREEN-MANURE CROPS MANAGEMENT IN CROATIA	54-63
Darko Jakšić, Veljko Perović, Ivan Bradić, Jordana Ninkov, Vesna Maraš, Pierfederico La Notte, Mirjam Vujadinovic Mandic	
THE APPLICATION OF ADVANCED TECHNOLOGIES IN THE RESEARCH OF <i>TERROIR</i> FACTORS IN VITICULTURE AND OENOLOGY	64-75
Stefan Gordanić, Dragoja Radanović, Snežana Mrđan, Jelena Golijan-Pantović, Sara Mikić, Željana Prijić, Tatjana Marković	
EXAMINATION OF THE INFLUENCE OF SOIL TYPE ON THE YIELD AND MORPHOLOGICAL PARAMETERS OF <i>Mellisa officinalis</i>	76-84
Dragana Šunjka, Sanja Lazić, Slavica Vuković, Antonije Žunić, Aleksandra Šušnjar	
DIETARY RISK ASSESSMENT OF DIAMIDE INSECTICIDES IN PEACH FRUITS	85-91
Ivana Radović, Aleksandar Radović, Slađana Savić, Milena Marjanović, Zorica Jovanović	
MORPHOLOGICAL AND QUALITY ATTRIBUTES OF SELECTED AUTOCHTHONOUS APPLE GENOTYPES FROM SERBIA	92-103
Boban Đorđević, Marko Sretenović, Dejan Djurović, Gordan Zec, Nemanja Tešić, Milana Stojanoski	

---

INFLUENCES OF <i>Bacillus subtilis</i> AND <i>Trichoderma harzianum</i> TO PRODUCTIVITY AND FRUITS QUALITY OF STRAWBERRY CULTIVAR 'CLERY'	104-112
Nebojša Marković, Zoran Pržić, Mitar Popadić COMPARATIVE ANALYSIS OF POTENTIAL CLONES OF THE ŽILAVKA VARIETY IN THE AREA OF THE SUBREGIONS OF MIDDLE NERETVA AND TREBIŠNJICA	113-120
Svjetlana Zeljković, Marina Pekez, Jelena Davidović Gidas, Margarita Davitkovska, Emina Mladenović INFLUENCE OF MICROBIOLOGICAL PREPARATION BACILLOMIX ON THE GERMINATION OF <i>Challistephus chinensis</i> L.	121-128
Željana Prijić, Sara Mikić, Vladimir Filipović, Ana Dragumilo, Stefan Gordanić, Petar Batinić, Natalija Čutović, Tatjana Marković SEED WEIGHT AND OPTIMAL IMBIBITION PERIOD FOR SOME HERBACEOUS PEONY ( <i>Paeonia</i> spp.) SPECIES NATIVE TO SERBIA	129-137
Đorđe Moravčević, Sandra Vuković, Sofija Kilibarda, Ana Vujošević, Jelena Pantović, Maja Sudimac, Stefan Gordanić, Aleksandar Ž. Kostić QUALITY OF CUCUMBER SEEDLINGS GROWN IN DIFFERENT SUBSTRATE VOLUMES	138-144
Tatjana Milaković, Biljana Kelečević, Vida Todorović, Siniša Mitrić INFLUENCE OF PHOTOSYNTHESIS INHIBITORS ON CHLOROPHYLL CONTENT	145-153
Hrabrin Bachev, Bozidar Ivanov ABOUT THE GOOD GOVERNANCE OF BULGARIAN AGRICULTURE	154-167
Katerina Kareska, Silvana Pashovska ECONOMIC INDICATORS FOR THE SUSTAINABILITY OF TOBACCO PRODUCTION IN THE REPUBLIC OF NORTH MACEDONIA	168-178
Nemanja Jalić, Nikola Ružević, Aleksandar Ostojić Z GENERATION ATTITUDES AND OPINIONS ABOUT BEER	179-190
Drago Cvijanović, Svetlana Vukotić, Vuk Mirčetić ASSOCIATING IN SERBIAN AGRICULTURE: COOPERATIVES AND CLUSTERS	191-201
Milivoje Ćosić, Boro Krstić, Vesna Gantner, Marija Lukić, Biljana Radovanović GENDER DIFFERENCES IN CHARACTERISTICS OF QUALITY, LOYALTY, RECOGNITION AND ASSOCIATION WITH THE BRAND "VALJEVSKO PIVO"	202-217
Vesna Gantner, Ivana Jožef, Dragan Solić, Ranko Gantner, Zvonimir Steiner VARIABILITY OF MASTITIS OCCURRENCE IN DAIRY SIMMENTALS DUE TO RECORDING TIME	218-225
Zrinko Mikić, Pero Mijić, Vesna Gantner ANIMAL WELFARE IN CATTLE BREEDING	226-233
Miloš Conić, Bratislav Pešić, Nebojša Zlatković, Nikola Stolić ANALYSIS OF BREEDING METHODS APPLIED IN THE TERRITORY OF THE NIŠAVA DISTRICT	234-244
Milica Đorđević-Adamović, Bratislav Pešić, Nikola Stolić, Nebojša Zlatković	245-254

COMPARATIVE ANALYSIS OF THE PRODUCTION RESULTS OF THE SVRLJIG AND PIROT SHEEP STRAINS

Miroslava Polovinski-Horvatović, Ivan Radović, Mile Mirkov, Dejan Beuković, Željko Ratkov, Savo Malešević

EFFECT OF TERMINAL SIRE GENOTYPE ON THE CARCASS CHARACTERISTICS OF THE FATTENING PIGS 255-261

Zvonimir Steiner, Ivan Babić, Ranko Gantner, Vesna Gantner

GROWTH CHARACTERISTICS OF CALVES GIVEN MILK REPLACEMENTS WITH VARIOUS PROTEIN AND CALORIE LEVELS 262-269

Aleksandra Jevtić, Saša Pešev

THE EFFECTS OF DIFFERENT ZEOLIT CONCENTRATIONS ON HEMATOLOGICAL BLOOD PARAMETERS IN DAIRY COWS 270-278

Maja Gregić, Matija Horvat, Tina Bobić, Vesna Gantner

POSITIVE INTERACTIONS BETWEEN HORSE AND RIDER 279-288

Biljana Pećanac, Bojan Golić, Dragan Knežević

ASSESSMENT OF CONTAMINATION WITH HEAVY METALS IN FOOD OF ANIMAL ORIGIN 289-300

Bojan Golić, Biljana Pećanac, Dragan Knežević

EVALUATION OF THE MICROBIOLOGICAL SUITABILITY OF DRINKING WATER ON FARMS OF DOMESTIC ANIMALS 301-316

**The application of advanced technologies in the research of *terroir* factors  
in viticulture and oenology**

Darko Jaksic<sup>1</sup>, Veljko Perovic<sup>2</sup>, Ivan Bradic<sup>3</sup>, Jordana Ninkov<sup>4</sup>, Vesna Maras<sup>5</sup>, Pierfederico  
La Notte<sup>6</sup>, Mirjam Vujadinovic Mandic<sup>7</sup>

<sup>1</sup> *Institute for Scientific Applications in Agriculture, Belgrade, Serbia*

<sup>2</sup> *Institute for Biological Research "Siniša Stanković", National Institute of the Republic of  
Serbia, University of Belgrade, Serbia*

<sup>3</sup> *Centre for Viticulture and Oenology Nis, Aleksandrovac office, Serbia*

<sup>4</sup> *Institute for Field and Vegetable Crops, National Institute of the R. of Serbia, Novi Sad,  
Serbia*

<sup>5</sup> *Faculty of Biotechnology, University of Montenegro, Podgorica, Montenegro*

<sup>6</sup> *CNR Institute for Sustainable Plant Protection, Bari, Italy*

<sup>7</sup> *Faculty of Agriculture, University of Belgrade, Serbia*

*Corresponding author: Darko Jaksic, darkojaksic@yahoo.com.au*

**Abstract**

Faced with a very picky market and strong competition from high-quality imported wines, it is necessary to shed light on the *terroir* characteristics of local wine-growing areas and the typicality of local wines, as this represents an opportunity to enhance the wine sector through geographical indications and the protection of small appellations. A necessary step in this complex process is the application of advanced technologies, i.e. new techniques and different modelling methods, accompanied by a spatial analysis of different parameters through the geographic information system (GIS).

This paper presents several examples of application of advanced technologies and development of innovative modelling methods in viticulture and winemaking in the Oplenac wine-growing district (Serbia), all of which have the potential for wider application and adaptation of developed methods to conditions in other wine-growing areas of the region. With the aim of studying the *terroir* factors, this paper presents modelling performed by applying the Analytical Hierarchy Process (AHP) method, which was used for modelling and classification of the studied abiotic *terroir* factors in hierarchical levels. The modelling and classification of the



abiotic *terroir* factors in hierarchical levels was performed using the Geographical Detector Method (GDM). Modelling with TOPSIS method was used in this work to present an example of modelling and ranking of analysed anthropogenic *terroir* factors. The application of the GIS technology was used in this paper to present examples of mapping favorability classes of abiotic and anthropogenic *terroir* factors and small appellations in particular absolute, elite, historic and organic vineyards, i.e. viticultural parcels. The Random Forest Clustering (RFC) method was used to present examples of wine quality and typicality prediction. Through this modelling, a link is established between the *terroir* factors studied and wine quality and typicality, which forms the basis for the protection of geographical indications in the EU PDO/PGI system. Finally, a comprehensive classification of viticultural micro-areas was made based on all the viticultural-oenological models developed.

*Key words:* abiotic and anthropogenic *terroir* factors, modelling, multicriteria analysis, GIS

### Introduction

Research on *terroir* factors occupies a central place in the European Union (EU) PDO/PGI system, as legislation requires evidence of a significant or decisive effect of specific natural and anthropogenic factors existing in the wine-growing area in question on the quality and characteristics of wine from that area (for PDOs). Determining causal relationships between the characteristics of a wine-growing area and the quality and characteristics of the wine, especially in the case of PDO designations, requires detailed research and extensive knowledge of the *terroir* of the area in question (Ninkov *et al.*, 2019), which requires extensive scientific research and expert analysis. Exploring the multifactoriality of *terroir* requires significant effort, data, and scientific knowledge. However, certain advanced technologies are currently being used for these purposes, some of which have been identified in the OIV Zoning Resolution (Resolution OIV-VITI 423-2012) and the Precision Viticulture Resolution (Resolution OIV-VITI 593-2019).

Numerous *terroir* research activities in the Western Balkans region were carried out in Serbia, where, in addition to zoning of wine-growing areas, small appellations have been introduced, which are actually traditional terms for wines with geographical indications: absolute, elite and historic viticulture parcels, as well as organic viticulture parcels (organic wine-growing locations and micro-areas). For the use of the names of the small appellations on the labels, i.e. for the use of the corresponding traditional terms, it is necessary that the micro-area in question

has extremely favourable or ideal soil, climatic, topographic and other necessary conditions for the successful cultivation of vines and the production of quality wines with the geographical indications, which is confirmed by the results obtained through the application of advanced technologies and corresponding innovative models.

For the research of *terroir* factors and their modelling, in addition to the application of the geographic information system (GIS), remote sensing, GPS devices and different software solutions, different models were used in this paper for the multicriteria analysis. One of the most important of the models used is the Analytical Hierarchy Process (AHP) method. This is a multi-attribute decision making (MADM) method that provides a powerful logical approach to solving complex multi-criteria decision types, breaking down the complex problem to obtain a hierarchical structure that shows the relationships among the objective, criteria, sub-criteria, and alternatives (Saaty, 1980; 2012). The Geographical Detector Method (MGD) applied in this paper relied on the use of the Geodetector programme, a software for measuring and assigning stratified (layered) heterogeneity. Stratified heterogeneity refers to phenomena that show more similarity within strata than between strata (<http://www.geodetector.cn/>). An important model for multicriteria analysis is the Technique for Order Preference by Similarity to Ideal Solution (TOPSIS) method. It is a ranking method proposed by Hwang and Yoon (1981) for solving multicriteria decision problems (Srđević, 2002). Random Forest Clustering (RFC) method is a machine learning method that uses a large number of nonlinear algorithms and a statistical learning method designed for classification, regression, and other tasks solved by constructing multiple decision trees and finding a class (classification) or a median/average prediction (regression) of the individual trees (Ho, 1995; 1998).

By applying these methods, i.e., machine learning with spatial analysis, many complex questions related to the study of *terroir* factors in viticulture and oenology can be answered.

### **Material and Methods**

The realisation of the innovative modelling in this paper was carried out through research activities aimed at the multifactorial *terroir* potential, i.e. through: terrain research with application of the GIS technology and GPS devices; laboratory analysis of soil and wine; preparation and statistical and geostatistical data processing; modelling and mapping with application of appropriate methods, GIS, software and extensions; as well as through validation of the obtained results and the obtained innovative models. Examples of viticultural-oenological modelling are presented for the area of the Oplenac wine-growing district

(Sumadija wine-growing region).

Research of location, i.e. spatial data of 836 commercial vineyards in the area of Oplenac wine-growing district was carried out by two different applications of GIS technology: application of only geospatial technology and relevant spatial maps and application of GPS devices and geospatial technology. Spatial exploration of vineyards was carried out according to the instructions of the Joint Research Centre of the European Commission for surveying vineyard parcels in the system for their control (Kerdiles *et al.*, 2008).

For the spatial exploration of existing and former vineyards, as well as for the general exploration of the wine-growing area, the methods and procedures of GIS were used in accordance with the principles for the use of GIS established in the OIV Resolution OIV-VITI 423-2012. For determination of spatial data, that is, parcels on which vineyards used to be for the purpose of modelling of potential historic viticultural parcels, archival maps from the Product Specification for the Protection of the Geographical Indication of the wine "Venčački Rizling" (Product specification No. 320-202/82-04 from 8. June 1982), and the documentation on vineyards from the Foundation of King Peter I Karadjordjevic in Oplenac were used. Spatial analysis was carried out for 667 micro-areas in which vineyards used to be in the territory of the current Oplenac wine-growing district.

Research of climate factors was carried out for the period 1988-2017, and the data from synoptic and climatological stations were interpolated by applying the successive correlation method (Cressman, 1959) on a regular grid with a horizontal resolution of 1 km, with the aim of spatial representation of climate characteristics. The modelled and spatially represented climate data were researched in accordance with the principles of OIV zonal resolution: Resol. OIV-VITI 423-2012. For modelling soil *terroir* factors, we processed soil data from previous research conducted by the Institute of Soil Science in Belgrade (Mrvić *et al.*, 2013) and obtained an estimate of soil loss ( $\text{t ha}^{-1} \text{ god}^{-1}$ ) by applying the USLE model (Wischmeier and Smith, 1978). To verify and confirm the data on modelled basic soil *terroir* factors from previous studies, we conducted additional soil analyses at four representative localities.

Laboratory analysis of wine quality and typicity parameters from representative vintages was conducted for wine made from *Chardonnay* and *Cabernet Sauvignon* grapes. A total of 25 quality and typicity parameters were analyzed using the WineScan™ Flex interferometer (merging of multiple light sources), which is based on Fourier transform infrared spectroscopy/infrared spectroscopy with Fourier transform (FTIR) technology (OIV/OENO 390/2010).

The application of the AHP and MGD methods, as well as the GIS technology, were used for the research, modelling and classification of the abiotic *terroir* factors, which in turn were used for the determination and classification of locations and micro-areas in relation to the favorability of the abiotic *terroir* factors.

The TOPSIS method and GIS technology were used to research, modelling, and ranking of anthropogenic *terroir* factors, which were used to determine and classify the vineyards in terms of the favorability of the anthropogenic *terroir* factors.

Further use of the GIS technology was aimed at modelling and determining small appellations, in particular: potential absolute, elite, and historic vineyard parcels, as well as potential organic wine-growing locations and micro-areas in the I (first) and II (second, more rigorous) levels of modelling.

The predictions on the quality and typicality of the wine, i.e. confirmation of data on the most important selected *terroir* factors and their impact on the quality and typicality of the wine, especially the wine with geographical indications, were made by applying the RFC method.

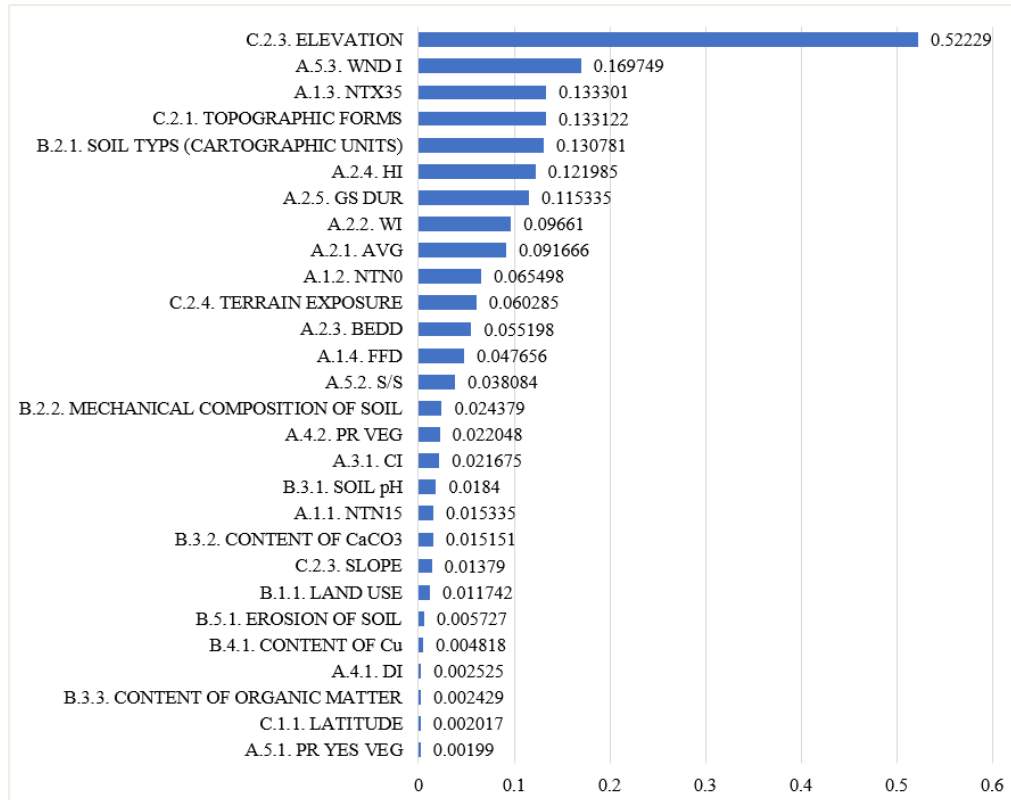
After the completion of the research and modelling results, and after the model validation, we developed an innovative scheme for a comprehensive characterization and classification of vineyards.

## Results and Discussion

### Modelling abiotic *terroir* factors

Modelling was performed by integrated application of the AHP method and GIS technology with three hierarchical criteria (general climate, soil and topographic *terroir* factors), 12 sub-criteria (*terroir* sub-factors) and 28 alternatives (basic *terroir* elements). At the first level of the hierarchy, the topographic *terroir* factor was selected as the most important criterion (general *terroir* factor). The next most important criteria, i.e., general *terroir* factors, were the soil and climate *terroir* factors. The consistency ratio determined in each case (CR) showed that there was a high consistency in the evaluation by the decision makers, and all importance ratings and rankings were confirmed as appropriate and valid.

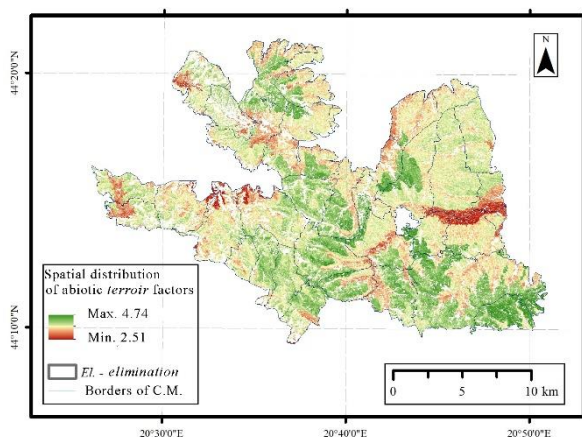
By applying the MGD method and determining the  $q$  value, the resulting factor detector showed that the highest  $q$  value is with the basic *terroir* element of altitude, and it can be concluded that this basic element has the highest importance among the studied abiotic *terroir* factors in terms of modelling the abiotic *terroir* factors (Graph 1).



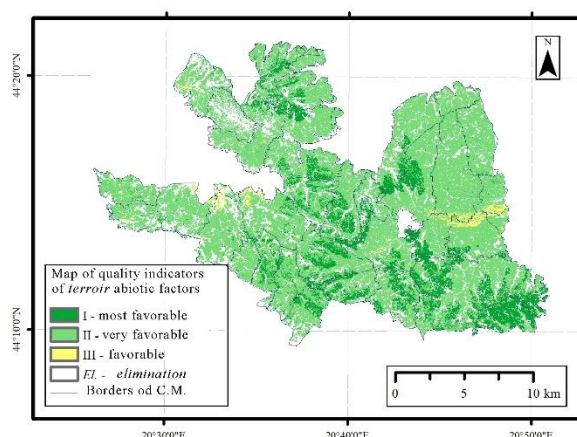
Graph 1 - Results of the factor detector for abiotic *terroir* basic elements

The risk detector of the MGD method was used to determine the average frequency of the basic *terroir* elements. The results of the risk detector show that in class I (most favourable), elevation as a basic *terroir* element has by far the highest frequency. On the positive side, of the 25 basic abiotic *terroir* elements, 15 elements in class V (least favourable) of the abiotic *terroir* factor quality indicators have no frequency at all (Table 1 in the Appendix).

By summing the reclassified favorability maps with the GIS technology, i.e. by summing the grid layers for all modelled basic *terroir* elements and for all modelled *terroir* subfactors and finally for the general *terroir* factors into a final sum map and by classifying them into equidistant classes of I (most favourable area), II, III, IV and V (unfavorable area) we obtained the final map of quality indicators for modelled abiotic *terroir* factors. The Oplenac wine-growing district has favourable abiotic *terroir* factors, and the obtained values of quality indicators for abiotic *terroir* factors ranged from minimum 2.51 (favourable class) to maximum 4.73 (most favourable class) (Map 1). The most favourable class (Class I) accounts for 14.16% of the area of the Oplenac wine-growing district (Map 2).



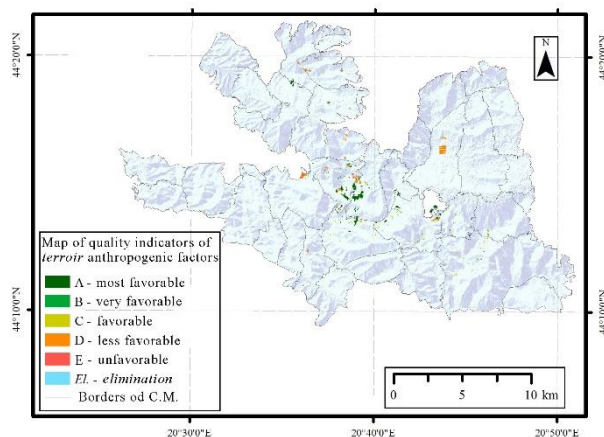
Map 1 - Spatial distribution of abiotic *terroir* factors



Map 2 - Map of quality indicators of abiotic *terroir* factors

### Modelling of anthropogenic *terroir* factors

Based on research and modelling of anthropogenic *terroir* factors through application of the TOPSIS method, it was determined that the most significant anthropogenic factor is the alternative (anthropogenic *terroir* factor) vine variety. By connecting vectoral data from vineyards with class ranges of quality indicators of anthropogenic factors, we drafted the final map of anthropogenic *terroir* factors quality indicators, with favorability classes A (most favorable), B, C, D, and E (unfavorable). It was determined that, on the level of the entire wine-growing area, the share of the most favorable A class is 29.43% of the entire surface (111.20 ha) (Map 3).



Map 3 – Map of anthropogenic *terroir* factors quality indicators

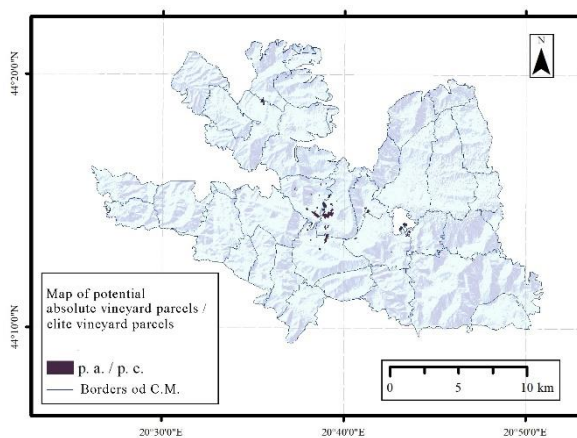
### Modelling of small appellations

#### Modelling of absolute and elite vineyard parcels

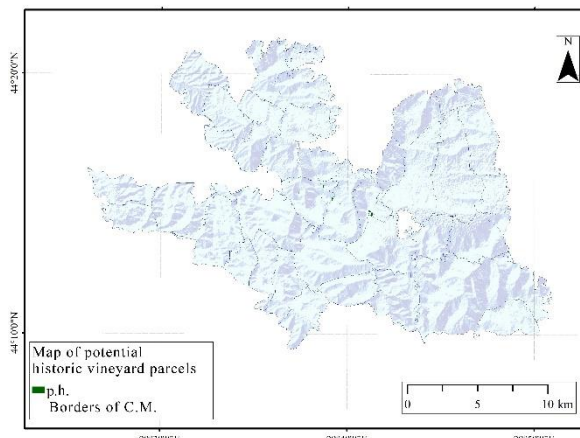
By applying the GIS technology and selecting vineyards classified in class I (most favourable) of the modelled abiotic *terroir* factors and in class A (most favourable) of the modelled anthropogenic *terroir* factors, we created a map of potentially absolute vineyard parcels (p. a.),

i.e., potentially elite vineyard parcels (p. e.). Of the total vineyards area of 282.03 ha, 91.18 ha are classified as potentially absolute (p. a.) and potentially elite (p. e.) vineyard parcels (Map 4).

By applying the GIS technology, i.e., by overlaying selected areas representing vineyards that meet the criteria for classification as p. a. or p. e., i.e., vineyards that meet the criteria for the traditional term for elite vineyard parcels and other legal conditions, and areas representing parcels that demonstrably had vineyards dedicated to the production of high quality grapes and wines, we created a map of potential historic vineyard parcels (p. i.). Of the total area of vineyards surveyed, 282.03 ha, 7.77 ha met the conditions for classification as p. i. (Map 5).



Map 4 - Map of potential absolute vineyard parcels / potential elite vineyard parcels



Map 5 - Map of potential historic vineyard parcels

## Modelling of potential organic wine-growing locations and micro-areas

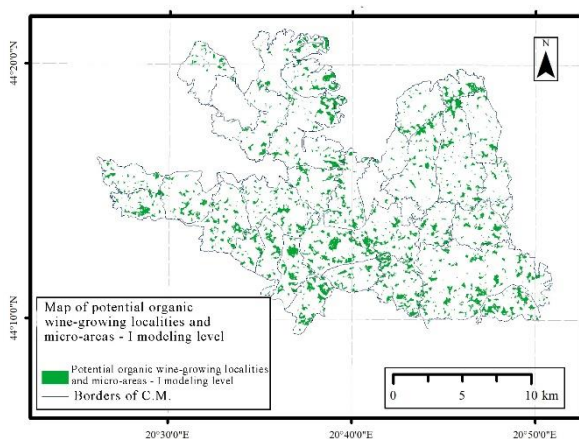
### I Modelling level

By creating buffer zones (using GIS technology) around the units at risk for organic cultivation, at a depth of 100 m around the potential pollutants, and by eliminating unfavourable soils that cannot be used for viticulture at the level of abiotic *terroir* factors, quality indicators I (most favourable) and II (very favourable), we selected potential organic wine-growing localities and micro-areas of the I modelling level (p. o. I) which totaled 3,658.16 ha (Map 6).

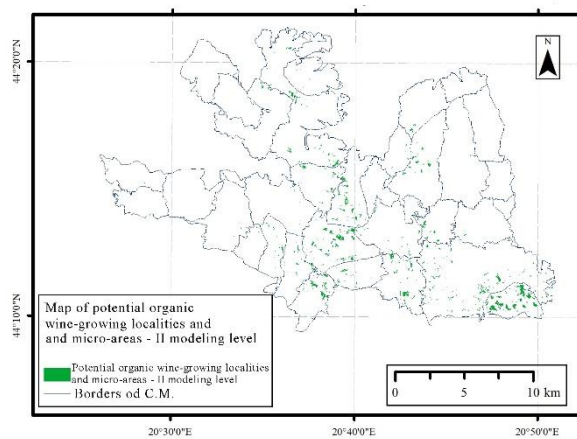
### II Modelling level

At the II modelling level for determining the organic wine-growing locations and micro-areas, the same GIS operations were performed as at the previous modelling level, but in this case only operations in class I (most favourable) of the quality indicators for abiotic *terroir* factors were performed. From the total area of all vineyards, potential organic vineyard locations and micro-areas according to the II modelling level (p. o. II), 481.98 ha were selected (Map 7).





Map 6 - Map of potential organic wine-growing locations and micro-areas according to the I modelling level



Map 7 - Map of potential organic wine-growing locations and micro-areas according to the II modelling level

### Model for prediction of quality and typicality of wine

By applying the RFC method, we selected two clusters representing common characteristics of the analysed quality and typicality parameters of wine of grapes of *Chardonnay* and *Cabernet Sauvignon* vine varieties. The obtained data, i.e. AIC, BIC and *silhouette* values, confirm the reliability of the model. The clustering of quality and typicality wine parameters confirmed the assumption that the studied quality and typicality wine parameters are grouped with respect to the predominant association of abiotic (cluster 1) versus anthropogenic *terroir* factors (cluster 2). In addition, application of the RFC method was used to determine the importance and ranking of examined quality and typicality wine parameters through use of the *Gini* index, wherein the dominant parameters that characterize the quality and typicality of wine were selected and correlated with the most important *terroir* factors determined through modelling of abiotic and anthropogenic *terroir* factors.

### System (model) for comprehensive characterization and classification of vineyards

Based on the above modelling, a system (model) for comprehensive characterization and classification of vineyards was developed, in which vineyards are characterised based on two class groups for two basic models (modelling abiotic and anthropogenic *terroir* factors) and based on six class groups and marks within five thematic models (modelling small appellations and geographical indications for wine).

## Conclusion

In order to evaluate the *terroir* factors with using the advanced technology, innovative multifactorial spatial models have been developed based on scientific expert research that allow



to determine the contribution of the studied *terroir* factors to the successful cultivation of the vine and to the production of high quality wines typical of the studied wine-growing area, especially wines with geographical indications. Since the models developed are comprehensive and involve a multidisciplinary approach, we have developed two basic (for modelling and classifying abiotic and anthropogenic *terroir* factors) and three thematic models (for modelling small appellations), as well as a model for predicting the quality and typicality of wines that validates previous models and results obtained. The paper presents the spatial data of the final maps using the example of the Oplenac wine-growing district for the developed models supported by spatial research, where the localities, micro-areas and vineyards are presented in relevant favorability classes, i.e. in relation to relevant marks. Finally, we developed an innovative system for comprehensive characterization and classification of vineyards, based on classification of vineyards and their designation per eight different classifications for each of the developed viticultural-oenological models.

The obtained modelling data showed that there is high consistency with valuation by decision-makers, thus, all valuations of significance, i.e., rankings in models were confirmed as appropriate and valid. Therefore, the developed modelling ensures multifactorial and spatial procedures and methodologies for proving the connection between examined *terroir* factors and the quality and typicality of wines in accordance with the EU PDO/PGI system, and for potential protection of small appellations.

### References

Cressman G. P. (1959). An operational objective analysis system. *Monthly Weather Review* 87: 367–374.

Hwang C. L., Yoon K. (1981). *Multiple Attribute Decision Making: Methods and Application*, Springer, New York.

Kerdiles H., Galabova K., Loudjani P., in collaboration with Spanu F. and Tatayas S. (2008). Control of area of vineyard parcels, Guidelines for measuring the area of vineyard parcels in the context of Regulations (EC) No 479/2008 and 555/2008. EUR 23524 EN – Joint Research Centre – Institute for the Protection and Security of the Citizen. EUR – Scientific and Technical Research series.

Mrvić V., Antonović G., Čakmak D., Perović V., Maksimović S., Saljnikov E., Nikoloski M. (2013). Pedological and pedogeochimical map of Serbia. *Zbornik radova, Međunarodna konferencija „Soil–Water–Plant“, 1<sup>st</sup> International Congress in Soil*

*Science*, September 23–26, Belgrade, Serbia, 93-104.

Ninkov J., Jakšić D., Tomić N., Marković S. (2019). *Terroir*, zemljište i geografsko poreklo vina, 13–28, in Ninkov J. (editor), *Karakteristike zemljišta Pocersko-valjevskog vinogradarskog rejona*. Novi Sad: Institut za ratarstvo i povrtarstvo.

OIV. (2012). Guidelines for vitiviniculture zoning methodologies on a soil and climate level, Resolution OIV-VITI 423-2012. <http://www.oiv.int/public/medias/400/viti-2012-1-en.pdf>.

OIV. (2019). OIV definition and general principles on precision viticulture, Resolution OIV-VITI 593-2019. <http://www.oiv.int/public/medias/6885/oiv-viti-593-2019-en.pdf>.

Specifikacija proizvoda za vino sa geografskim poreklom (product specification) „Venčački rizling“ (1982). Number 320-202/82-04 from 8th June 1982.

OIV. (2010). Guidelines on infrared analysers in oenology, Resolution OIV/OENO 390/2010. <https://www.oiv.int/public/medias/1239/oiv-oeno-390-2010-en.pdf>.

Saaty T. L. (1980). *The analytic hierarchy process*. New York: McGraw Hill.

Saaty T. L. (2012). *Decision Making for Leaders: The Analytic Hierarchy Process for Decisions in Complex World*. Third Edition, Fifth Printing. Pittsburgh: RWS publications.

Srđević B., Srđević Z., Zoranović T. (2002). PROMETHEE, TOPSIS and CP in multicriteria decision making in agriculture. *Letopis naučnih radova Poljoprivrednog fakulteta* 26 (1): 5–23.

Wischmeier W. H., Smith D. D. (1978). Predicting Rainfall Erosion Losses: A Guide to Conservation Planning. *Agriculture Handbook* No. 537. USDA/Science and Education Administration, US. Govt. Printing Office, Washington, DC.

Other sources

<http://www.geodetector.cn/> - Geodetector

Appendix

Table 1 – Results of risk detector for abiotic basic *terroir* elements

Basic <i>terroir</i> elements	Favorability class				
	V	IV	III	II	I
A. 1. 1. NTN15			3.716552	3.65564	3.735621
A. 1. 2. NTN0	3.234000	3.652477	3.700285	3.793158	3.649085
A. 1. 3. NTX35	3.539651	3.766637	3.807786	3.607576	3.010778
A. 1. 4. FFD	3.483707	3.666108	3.697433	3.786948	3.717534
A. 2. 1. AVG		3.461709	3.750025	3.742464	3.47903
A. 2. 2. WI	3.051559	3.52062	3.770632	3.73291	3.484431
A. 2. 3. BEDD		3.454441	3.767311	3.687429	
A. 2. 4. HI	3.435747	3.652964	3.79528	3.759373	3.53842
A. 2. 5. GS DUR	3.459234	3.693722	3.773277	3.764157	3.483371
A. 3. 1. CI	3.225870	3.600385	3.731481	3.698123	3.69563
A. 4. 1. DI			3.719066	3.68573	
A. 4. 2. PR VEG		3.596517	3.590888	3.746721	3.719862
A. 5. 1. PR YES VEG			3.684472	3.715903	3.717127
A. 5. 2. O/Z		3.611316	3.577685	3.671491	3.78694
A. 5. 3. WND I	3.424475	3.633209	3.79132	3.833117	3.586522
B. 1. 1. Manner of soil use		3.685494	3.70121	3.790294	3.806086
B. 2. 1. Types of soil – cartographic units	3.489231	3.585675	3.737055	3.75909	3.810533
B. 2. 2. Mechanical soil composition		3.816748	3.709151	3.759384	3.626496
B. 3. 1. pH soil reaction			3.573458	3.677953	3.745755
B. 3. 2. CaCO <sub>3</sub> content		4.003857	3.700026	3.872904	3.778557
B. 3. 3. Organic matter content		3.70498	3.783877	3.689507	3.71927
B. 4. 1. Total copper content (Cu <sub>T</sub> )			3.836583	3.741721	3.703161
B. 5. 1. Soil loss through water erosion		3.215821	3.480654	3.701701	3.712547
C. 1. 1. Geographic latitude				3.419524	3.709702
C. 2. 1. Topographic forms	3.585836	3.547378	3.679662	3.891818	3.807718
C. 2. 2. Elevation	3.056989	2.840018	3.554886	3.592399	3.936552
C. 2. 3. Terrain slope	3.700496	3.758795	3.719083	3.674789	3.639924
C. 2. 4. Terrain exposure	3.555627	3.668595	3.718752	3.751237	3.832794